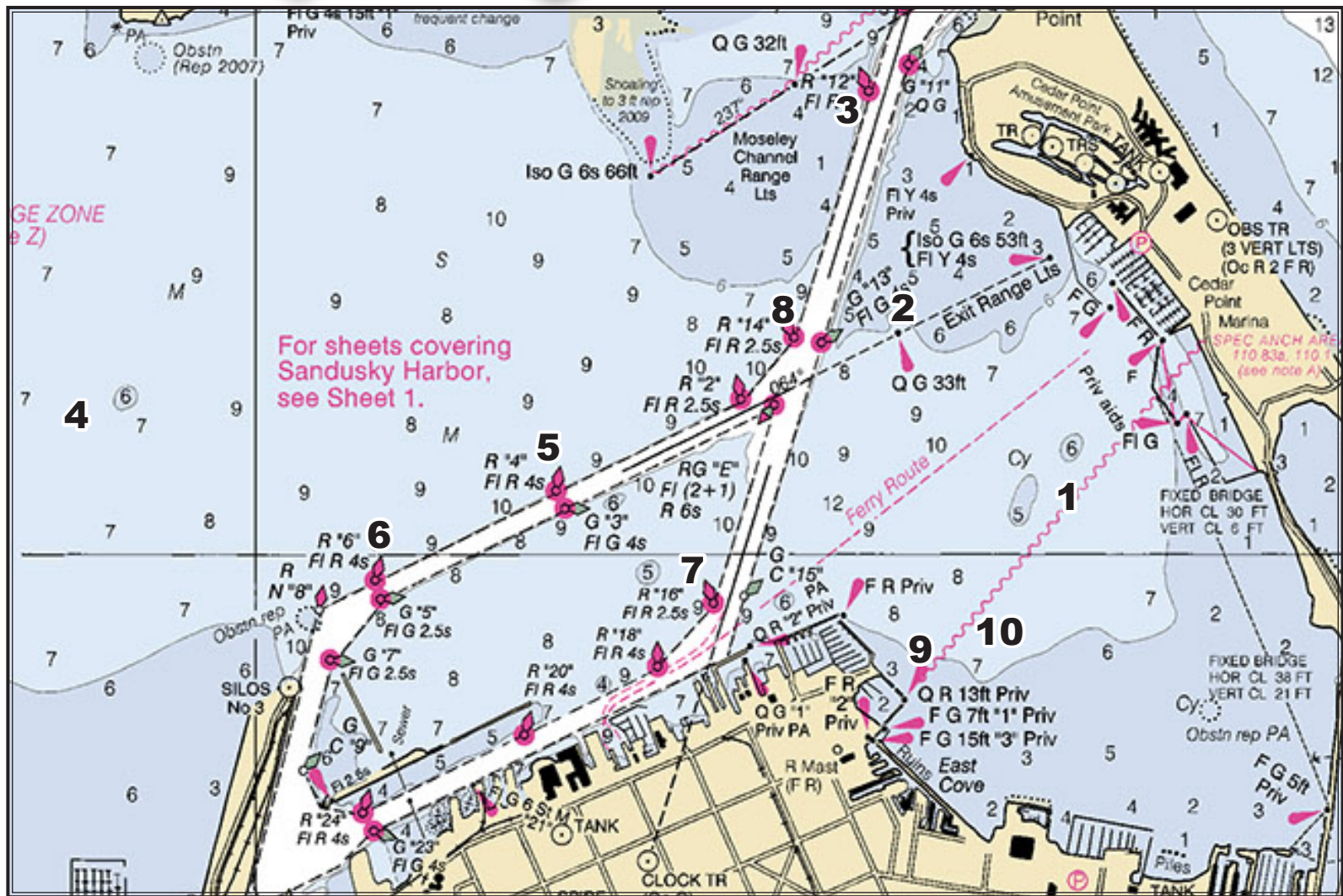


Wednesday Evening Race Courses - Centerboard



MARK LIST:

- 1) SSC orange inflatable. Position changes per course
 - 2) Exit Range, FG 4s, 33ft
 - 3) R "12" channel buoy
 - 4) SHYC white pin #???
 - 5) R "4" channel buoy
 - 6) R "6" channel buoy
 - 7) R "16" channel buoy
 - 8) R "14" channel buoy
 - 9) SSC entrance buoy white pin
 - 10) SSC yellow inflatable
- START (1)** SSC orange inflatable and Race Committee boat
- FINISH** SSC entrance buoy white pin(9) and SSC yellow inflatable(10)

CENTERBOARD COURSES

- N:** 1(start), 2p, 9(finish) - approx 3 st miles
- NE:** 1(start), 10p, 1p, 9(finish) - approx 2 st miles
- E:** 9(start), 1p, 9p, 1p, 9(finish) - approx 3 st miles
- SE:** 1(start), 8p, 9(finish) - approx 3 st miles
- S:** 1(start), 2p, 1p, 2p, 9(finish) - approx 3 st miles
- SW:** 1(start), 10p, 1p, 9(finish) - approx 3 st miles
- W:** 1(start), 10p, 1p, 9(finish) - approx 2 st miles
- NW:** 1(start), 8p, 9(finish) - approx 3 st miles